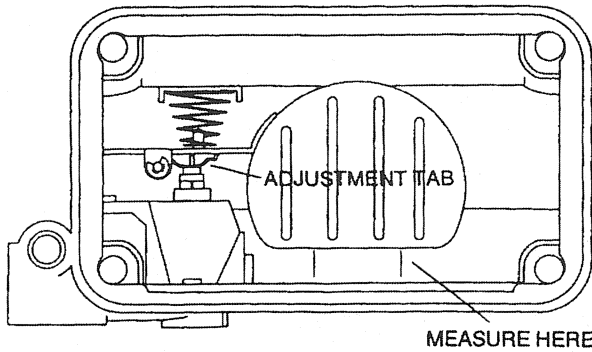


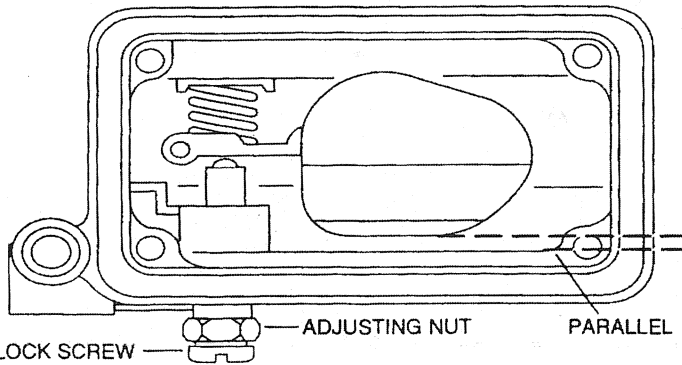
FIG. 1. DRY FLOAT LEVEL ADJUSTMENT

CAUTION: DO NOT EXERT PRESSURE ON RESILIENT NEEDLE VALVE.



WITH FLOAT BOWL INVERTED, MEASURE DISTANCE BETWEEN SURFACE OF FLOAT BOWL AND FLOAT.

FIG. 2. DRY FLOAT LEVEL ADJUSTMENT



WITH FLOAT BOWL INVERTED, TURN NEEDLE SEAT ASSEMBLY UNTIL FLOAT IS PARALLEL WITH THE SURFACE DIRECTLY BELOW THE FLOAT. TIGHTEN LOCK SCREW.

FIG. 3. PUMP ADJUSTMENT

- ④ ADJUST CLEARANCE BETWEEN PUMP LEVER AND ADJUSTING NUT (CLEARANCE IS .015).
- ② HOLD THROTTLE IN WIDE OPEN POSITION.

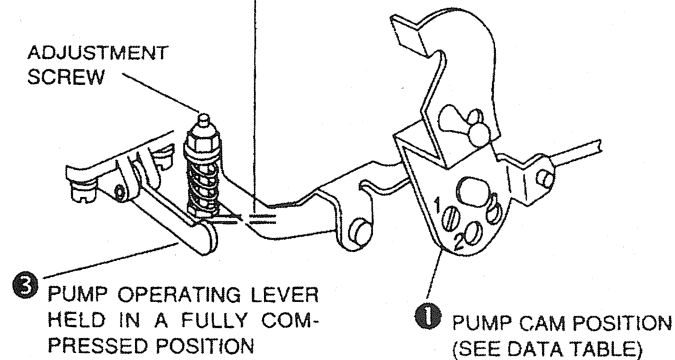
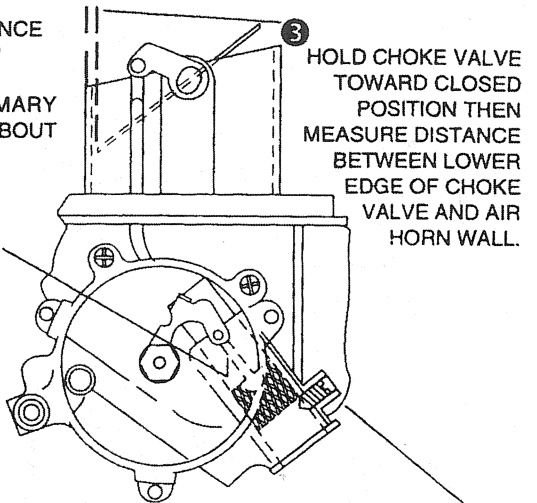


FIG. 4. CHOKE PLATE PULLDOWN ADJUSTMENT

CLEARANCE
140"

- ① BLOCK PRIMARY THROTTLE ABOUT HALF OPEN.

- ② PUSH CHOKE PISTON DOWNWARD AGAINST ADJUSTMENT SCREW (USING WIRE WITH 1/8" BEND AT END).



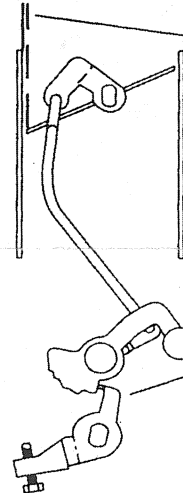
- ③ HOLD CHOKE VALVE TOWARD CLOSED POSITION THEN MEASURE DISTANCE BETWEEN LOWER EDGE OF CHOKE VALVE AND AIR HORN WALL.

- ④ TO ADJUST (REMOVE PUTTY FROM SCREW HOLE), TURN SCREW CLOCKWISE TO DECREASE THE CHOKE OPENING AND COUNTER CLOCKWISE TO INCREASE THE CHOKE OPENING.

FIG. 5. UNLOADER ADJUSTMENT

CLEARANCE
.300"

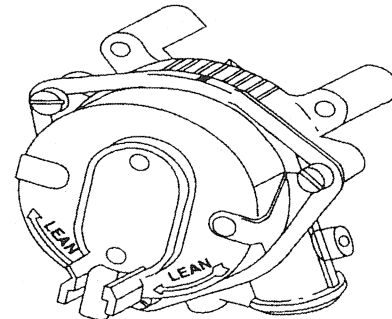
- ② HOLD CHOKE VALVE TOWARD THE CLOSED POSITION THEN MEASURE DISTANCE BETWEEN LOWER EDGE OF CHOKE VALVE AND AIR HORN WALL.



- ③ TO ADJUST, BEND PAWL ON FAST IDLE SPEED LEVER.

- ① HOLD THROTTLE PLATES IN WIDE OPEN POSITION.

FIG. 6. AUTOMATIC CHOKE SETTING



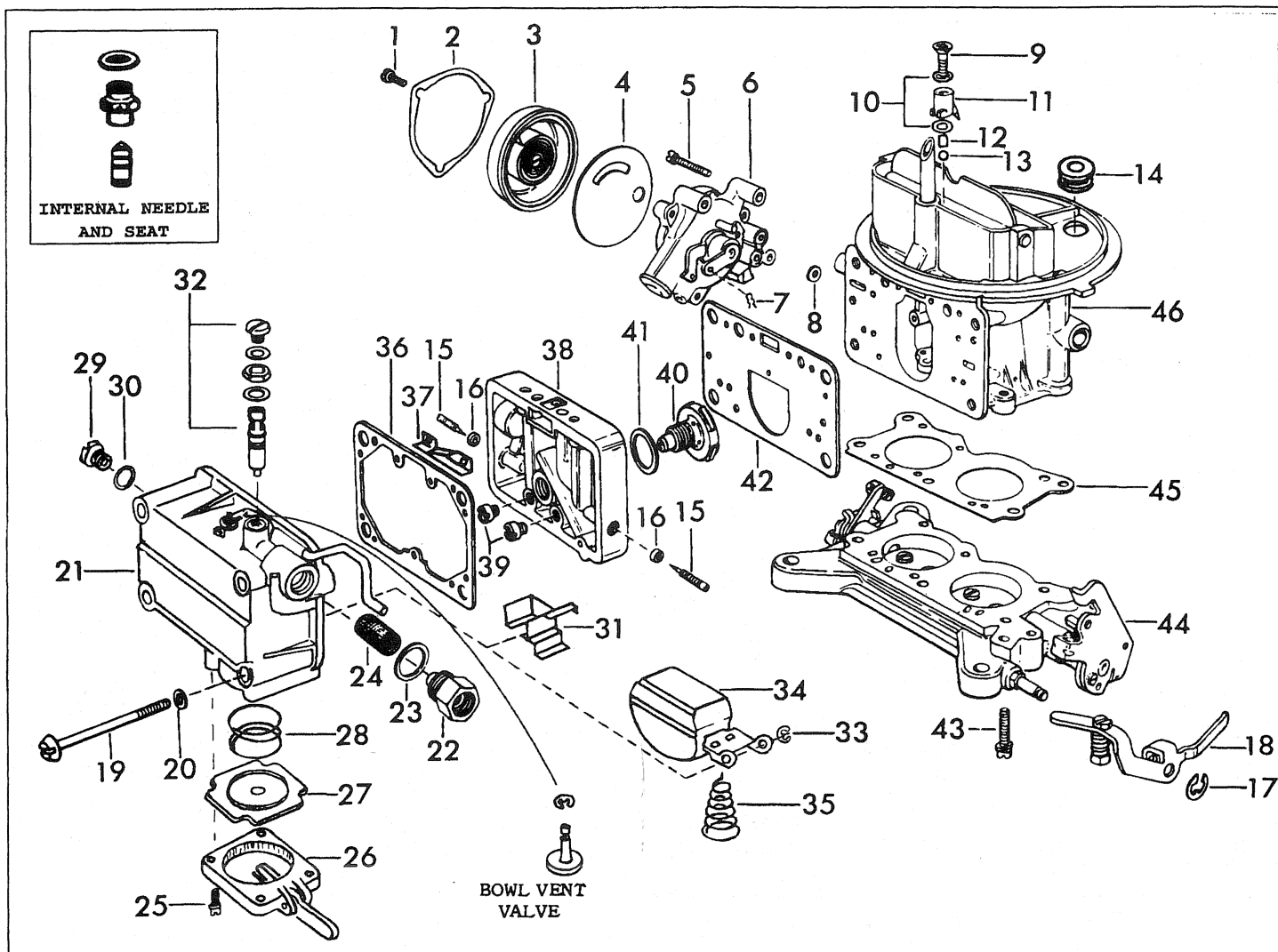
ALIGN MARK ON STAT COIL WITH PROPER INDEX MARK ON CHOKE HOUSING (SEE DATA TABLE FOR SETTING).

ADJUSTMENT DATA TABLE

Ford Tag No.	Holley List No.	Float Setting	Pump Cam Pos.	Choke Cap Setting	Ford Tag No.	Holley List No.	Float Setting	Pump Cam Pos.	Choke Cap Setting
D1FF-9510-LA	6150	1/2"	#2	Index	-----	50417-1	1/2"	#1	3 NL
D1JJ-9510-B	6317	1/2"	#2	Index	E8JL-9510-AA	50461	1/2"	#1	Index
D2JL-9510-B	6317-1	1/2"	#2	Index	-----	50461-1	1/2"	#1	Index
D3JL-9510-S	7036	1/2"	#1	3 NL	E9JL-9510-BA	50467	1/2"	#1	4 NL
E6JL-9510-GA	50417	1/2"	#1	3 NL	F1JL-9510-AA	50467-1	1/2"	#1	4 NL

GENERAL EXPLODED VIEW

THE GENERAL DESIGN AND PARTS SHOWN WILL VARY TO
INDIVIDUAL UNITS COVERED ON THIS INSTRUCTION SHEET.



NOMENCLATURE

REF.
NO.

1. SCREW-STAT COVER
2. CLAMP-STAT COVER
3. STAT COVER
4. GASKET-STAT COVER
5. SCREW & LOCKWASHER-CHOKE HOUSING ASSY.
6. CHOKE HOUSING ASSY.
7. RETAINER-CHOKE ROD LOWER
8. GASKET-CHOKE HOUSING
9. SCREW-PUMP DISCHARGE NOZZLE
10. GASKETS-PUMP DISCHARGE NOZZLE
11. NOZZLE-PUMP DISCHARGE
12. WEIGHT-PUMP CHECK BALL
13. BALL-PUMP DISCHARGE CHECK
14. GROMMET-COLD AIR CHOKE TUBE
15. NEEDLE-IDLE ADJUSTING
16. SEAL-IDLE NEEDLE
17. RETAINER-PUMP OPERATING LEVER
18. LEVER-PUMP OPERATING
19. SCREW-FUEL BOWL
20. GASKET-FUEL BOWL SCREW
21. FUEL BOWL ASSEMBLY
22. FITTING-FUEL INLET
23. GASKET-FUEL INLET FITTING
24. SCREEN-FUEL INLET

REF.
NO.

25. SCREW & LOCKWASHER-PUMP COVER
26. PUMP COVER ASSEMBLY
27. DIAPHRAGM-PUMP
28. SPRING-DIAPHRAGM RETURN
29. PLUG-FUEL LEVEL
30. GASKET-FUEL LEVEL PLUG
31. BAFFLE PLATE
32. NEEDLE, SEAT, O-RINGS & NUT ASSEMBLY
33. RETAINER-FLOAT
34. FLOAT ASSEMBLY
35. SPRING-FLOAT
36. GASKET-FUEL BOWL
37. BAFFLE-METERING BODY VENT
38. BODY-MAIN METERING
39. MAIN JETS
40. POWER VALVE
41. GASKET-POWER VALVE
42. GASKET-METERING BODY
43. SCREW & LOCKWASHER-THROTTLE BODY
44. THROTTLE BODY ASSEMBLY
45. GASKET-THROTTLE BODY
46. MAIN BODY ASSEMBLY